

邻里

好好玩!



文：王康斌
图：李丹

Early Years (3 – 4 years old) Mother Tongue Languages Story Card Set

Advisors

Mdm Heng Boey Hong	Director, Mother Tongue Languages Branch, Curriculum Planning and Development Division 1
Ms Anne Teh Lay Choo	Deputy Director, Mother Tongue Languages Branch, Curriculum Planning and Development Division 1
Mdm Santhi Sellappan	Deputy Director, Mother Tongue Languages Branch, Curriculum Planning and Development Division 1
Mr Zafilin Abdul Hamid	Deputy Director, Mother Tongue Languages Branch, Curriculum Planning and Development Division 1
Dr Suppalachemy Singaram	Assistant Director, Tamil Language/ Lead Specialist Mother Tongue Languages Branch, Curriculum Planning and Development Division 1
Mdm Noor Azimah Mohamed Haad	Assistant Director, Malay Language Mother Tongue Languages Branch, Curriculum Planning & Development Division 1
Mrs Teo-Zhang Juan Juan	Assistant Director, Chinese Language Mother Tongue Languages Branch, Curriculum Planning & Development Division 1

Team members

Haslindah Mispan	Lead Specialist, Malay Language
Usha Janarth	Senior Specialist, Tamil Language
Lee Keng Chin	Senior Curriculum Planning Officer, Chinese Language
Wee Khang Ping	Senior Curriculum Planning Officer, Chinese Language
Lee Khai Qi	Curriculum Planning Officer, Chinese Language
Melissa Sin	Curriculum Planning Officer, Chinese Language
Wong Pei Fen	Curriculum Planning Officer, Chinese Language
Hafizzah Bedin	Curriculum Planning Officer, Malay Language
Nur Izziana Kamaruddin	Curriculum Planning Officer, Malay Language
Nisfawati Md Zainuddin	Curriculum Resource Development Officer, Malay Language
Gowri Sataymuthi	Curriculum Planning Officer, Tamil Language
Komalavalli Algasamy	Curriculum Planning Officer, Tamil Language
Shamini Subramaniam	Curriculum Resource Development Officer, Tamil Language
Thajunisah d/o Mohidin	Curriculum Resource Development Officer, Tamil Language

Pre-school Team

Mother Tongue Languages Branch
Curriculum Planning and Development Division 1
Ministry of Education, Singapore

Acknowledgement

We would like to express our appreciation to the specialists, principals and teachers of the following institutes of higher learning, training agencies, kindergartens and childcare centres for their valuable feedback during the consultative process:

National Institute of Early Childhood Development (NIEC)
PAP Community Foundation, Headquarters
PPIS Child Development Centre (Preschool Development Division)
E-Bridge Pre-School at Blk 670 Edgefield Plains
E-Bridge Pre-School (Punggol)
Istiqamah Mosque Kindergarten (Serangoon)
Khalsa Kindergarten
MY World @ Punggol
MY World @ St George's
NTUC First Campus' My First Skool at Blk 212 Choa Chu Kang Central
NTUC First Campus' My First Skool @ Marine Parade Blk 18
NTUC First Campus' My First Skool @ Yishun Blk 423

NTUC First Campus' My First Skool @ Yishun Blk 796A
PCF Sparkletots Preschool @ Bishan East- Sin Ming Blk 409
PCF Sparkletots Preschool @ Canberra Blk 468C
PCF Sparkletots Preschool @ Cashew Block 183
PCF Sparkletots Preschool @ Fengshan Blk 126
PCF Sparkletots Preschool @ Pasir Ris West Blk 517
PCF Sparkletots Preschool @ Pasi Ris West Blk 738
PPIS Child Development Centre (Bukit Batok)
Ramakrishna Mission Sarada Kindergarten
Skool4Kidz Preschool @ Marsiling Drive
Skool4kidz Preschool @ Woodlands Ring
St. James' Church Kindergarten (Harding)

Developed by Ministry of Education, in collaboration with the Early Childhood Development Agency.

© 2020 Early Childhood Development Agency

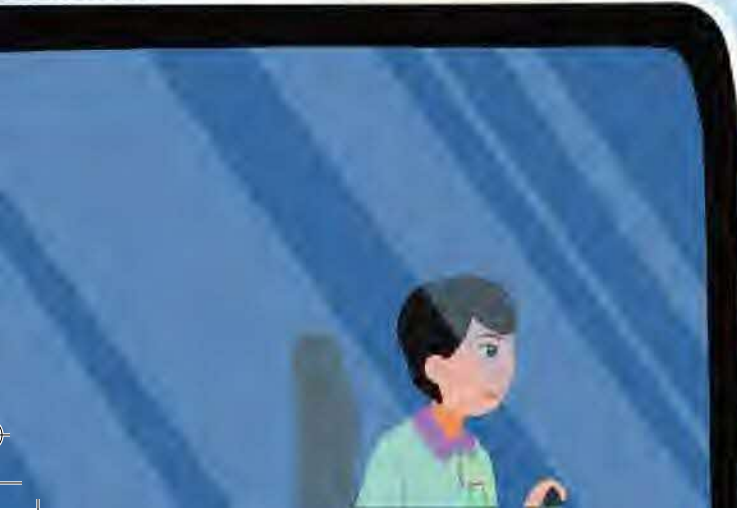
51 Cuppage Road
#08-01
Singapore 229469

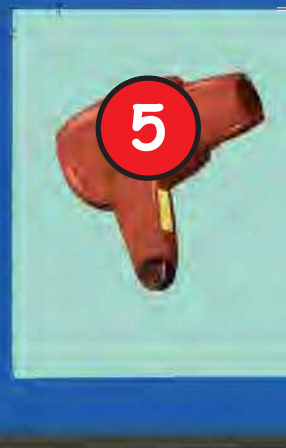
All rights reserved. No part of this publication may be reproduced, stored in a retrieval system or transmitted, in any form or by any means, electronic, mechanical, photocopying, recording or otherwise, without the prior written permission of the Early Childhood Development Agency, Singapore.

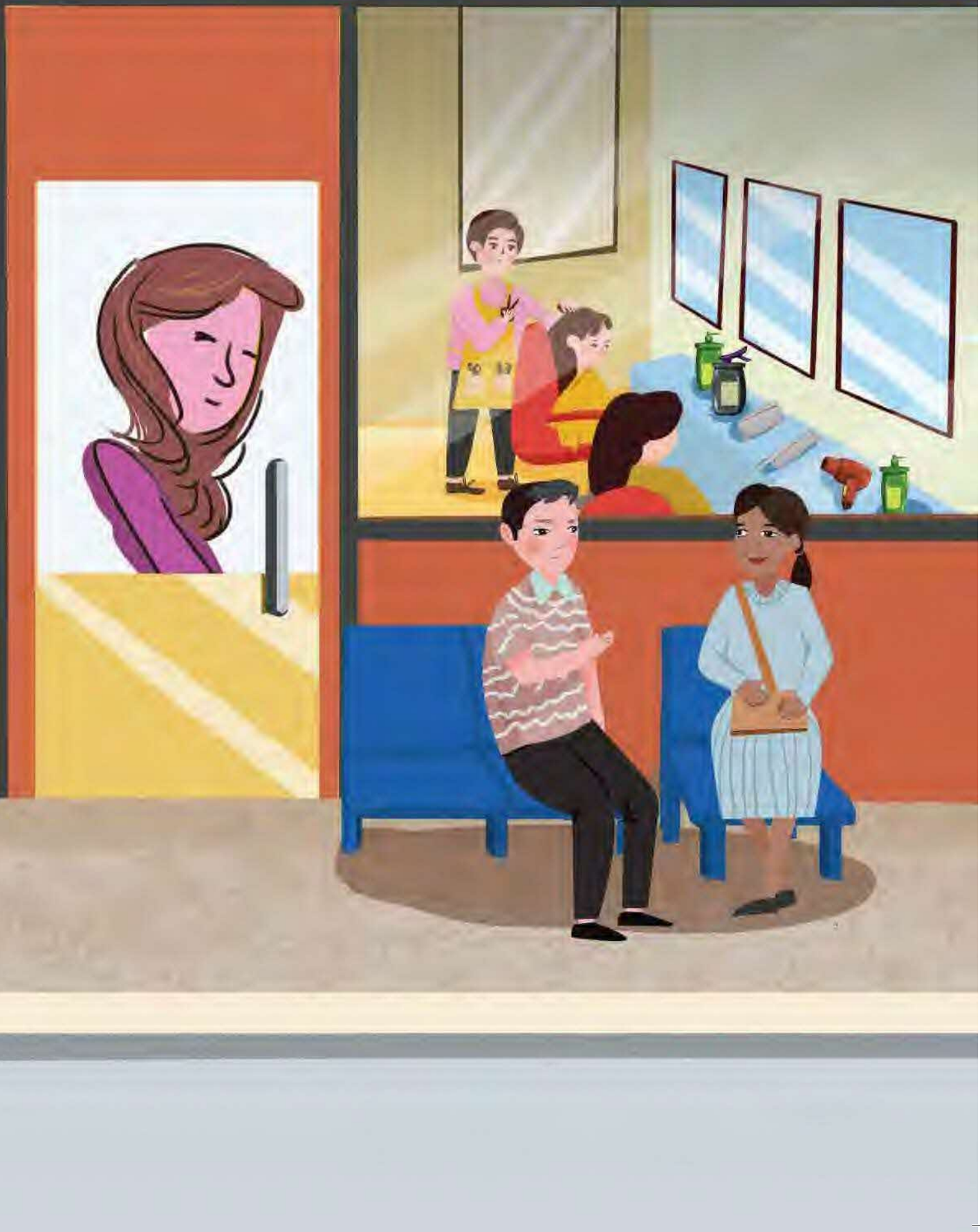
Published by TOPIX Pte Ltd
ISBN











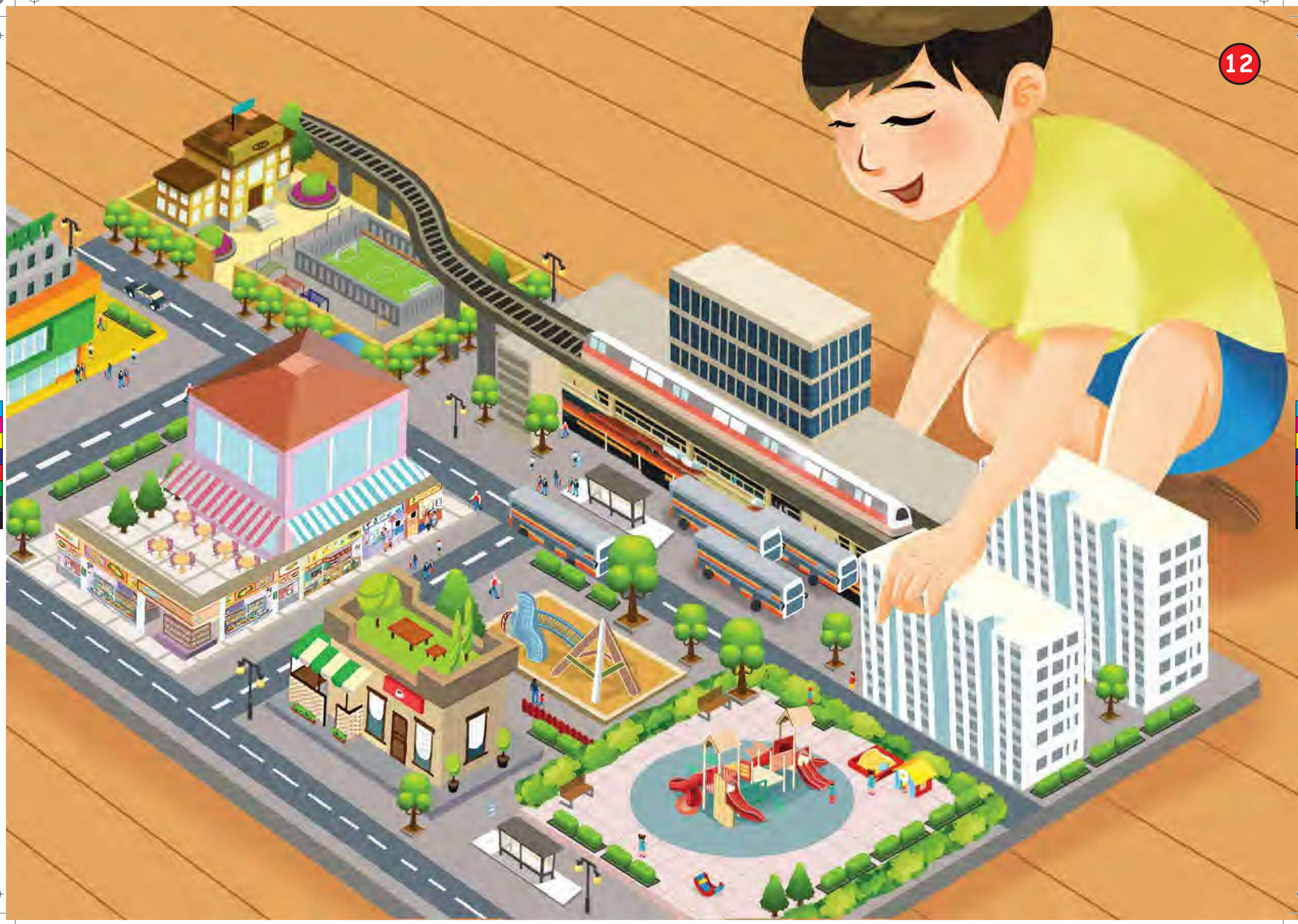
















一家四口乘搭675号的双层巴士，经过了邻里的不同地点，如巴士转换站、地铁站、咖啡店、理发店等常见的场景。巴士停靠在巴士站时，一位坐轮椅的老伯和这家人准备下车。妈妈见状，即刻上前帮助他。在回家途中，他们见到幼儿园外的社区公园里有一群幼儿在一边玩乐，一边探索周围的花草树木。当“镜头”逐渐拉远，才揭晓所有的场景原来是由玩具积木建构而成的……